

# CCVSR

## Video Session Recorder

- The Control Center Video Session Recorder (CCVSR) is ATEN's innovative software designed to securely record the video and operation of computers accessed through KVM over IP Switches. The software automatically records a video of the screen display and logs all key-strokes and mouse clicks when computers are accessed through KVM ports.

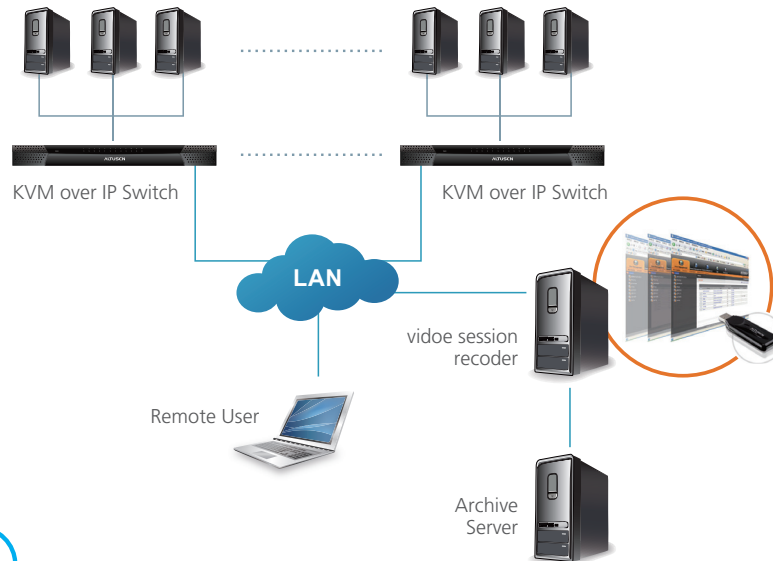
The CCVSR is developed to work with ATEN KVM over IP Switches without the need to install agent software on all computers. The software can be installed and managed from a single computer which will automatically capture and save video recordings for you. Simply set the CCVSR software to record ports on a KVM switch and it automatically creates a video recording every time the computers are accessed. The CCVSR supports recording across multiple KVM over IP Switches and multiple KVM ports\* can be recorded at the same time.

The CCVSR deployment is highly scalable and flexible. It supports single or multiple CCVSR servers giving IT managers the ability to start small and expand gradually. A simple license policy reduces the complexity of upgrades. The single portal and single IP design for multiple CCVSR servers mitigates management. Disk space management is automatically controlled by the CCVSR to eliminate the need of manual disk administration.

The CCVSR is an ideal management tool to accompany any KVM installation. The software records operations from the BIOS to logging in; from running software applications to configuring any part of the operating system all actions are recorded and saved without exception. It's also a great tool for administrators to easily generate step by step instructional videos for any system procedure.

The CCVSR is a great tool for capturing evidence or tracing issues for immediate troubleshooting and faster problem resolution. The software can help monitor compliance control and auditing efficiently. It quickly helps IT managers know what every remote KVM user, internal KVM user, or IT service contractor is doing on the servers, with full coverage of all actions; saved in a bulletproof system for future auditing.





## Features

- KVM session recording - automatically create complete recordings of a computer's operations.
  - Records a video of the screen display as well as logs the operations of keystrokes and mouse clicks
  - Support Archive Server - archive all recordings automatically\* **New**
  - Recordings are saved to an indexed database for advanced searching.
  - Search functions with keyword filters for retrieving video recordings
  - Supports high quality video recording – with video resolutions up to 1920 x 1200 with 24 bit color depth
  - **Supports recording on multiple KVM over IP Switches**
  - **Simultaneously records and plays the operation of multiple KVM ports\*\***
  - Special video player tools with proprietary format and video record export function with password protection for enhanced security
  - **Automatic disk space management**
  - Automatically runs software as daemon service in the background **New**
  - IP Filter for enhanced protection
  - System event notification via SMTP email; SNMP trap and Syslog support
  - Configurable user and group permissions—for search, play, system management, record management, and save management
  - Port level permissions – users can only view ports they have been authorized on
  - Supports device level event logs
  - Multilanguage GUI Supports: English, Traditional Chinese, Simplified Chinese, Japanese, and Korean **New**
  - Multi-browser support: Internet Explorer, Chrome, Firefox, Safari, Opera, Mozilla
  - Supports TLS 1.2 data encryption and RSA 2048-bit certificates to secure user logins from browsers
  - 3rd party remote authentication supports: RADIUS, LDAP, LDAPS, and MS AD Directory
- \* Additional license purchase required
- \*\* Up to 12 KVM sessions can be recorded at one time when the recommend system requirements of the CCVSR server are met.

## Recommend System Requirements

CPU: Intel® Core™ i5-3300 Desktop Processor Series (3rd Generation Intel® Core™ i5 Processors) or equivalent AMD CPU  
 Memory: DDR3 2 GB RAM  
 Network: Gigabit Ethernet Adapter  
 OS: Windows

## Benefits

Features	Advantages	Benefits
Records all operations and changes on computers connected to KVM over IP Switches	Automatic start/stop recording of all computer operations, from BIOS-level to operating system and software applications, and saved to video files	<ul style="list-style-type: none"> <li>• User transparency</li> <li>• Enforcement</li> <li>• No application limitation</li> <li>• Ensures operational integrity</li> </ul>
Advanced playback tool	Provides integrated tool for playback, and files for distribution can be created with password protection	<ul style="list-style-type: none"> <li>• Unnecessary to install additional media player</li> <li>• Enhanced security for recordings</li> </ul>
Indexed database of video recordings	All videos are recorded and saved to database with index for easy searching and playback.	<ul style="list-style-type: none"> <li>• Fast trouble tracing and problem resolution</li> <li>• Easily create training and educational videos</li> <li>• Increased security, manageability and productivity</li> </ul>
Supports single server and multiple servers setups	Accommodates growing system environment, and supports both large and small scale computer setups.	<ul style="list-style-type: none"> <li>• Flexibility</li> <li>• Scalability</li> <li>• Adaptability</li> <li>• Cost Efficient</li> </ul>

### CCVSR Compatible KVM over IP Switches

- KN1108v / KN1116v, KN2116VA / KN2132VA / KN4116VA / KN4132VA / KN4164V / KN8132V / KN8164V / KN2116A / KN2132 / KN4116 / KN4132, KN2116v / KN2132v / KN4116v / KN4132v, KN2124v / KN2140v / KN4124v / KN4140v, CN8600
- SN9108 / SN9116, SN0108A / SN0116A / SN0132 / SN0148

### License Options

Model	Node	Add License Model	Add Node
CCVSR08	8	CCVSRN1	1
CCVSR16	16	CCVSRN8	8
CCVSR32	32	CCVSRN16	16
CCVSR64	64	CCVSRN32	32
CCVSR128	128	CCVSRN64	64
CCVSR256	256	CCVSRN128	128
CCVSR512	512	CCVSRN256	256
CCVSR1024	1024	CCVSRN512	512
CCVSR2048	2048	CCVSRN1024	1024
		CCVSRN2048	2048

### Add Archive Server License

Add License Model	Add Archive Server
CCVSRAS1	1

### USB License Key Specifications

Function	CCVSR USB License Key	
Environment	Operating Temp.	0 – 40°C
	Storage Temp.	-20 – 60°C
	Humidity	0–80% RH, Non-condensing
Physical Properties	Composition	Metal & Plastic
	Weight	14 g
	Dimensions	8.36 x 2.77 x 1.37 cm

#### ATEN International Co., Ltd.

3F., No.125, Sec. 2, Datong Rd., Sijhih District., New Taipei City 221, Taiwan  
 Phone: 886-2-8692-6789 Fax: 886-2-8692-6767  
 www.aten.com E-mail: marketing@aten.com

Printed 03/2016 V4.0



© Copyright 2016 ATEN® International Co., Ltd.  
 ATEN and the ATEN logo are trademarks of ATEN International Co., Ltd.  
 All rights reserved. All other trademarks are the property of their respective owners.